

## A303 Sparkford to Ilchester Dualling Scheme TR010036

### 9.22 Chronology of Hazlegrove House Registered Park and Garden

Planning Act 2008

April 2019

Volume 9.0



Infrastructure Planning

Planning Act 2008

**A303 Sparkford to Ilchester Dualling  
Scheme**

Development Consent Order 201[X]

---

**Chronology of Hazlegrove House Registered Park  
and Garden**

---

<b>Regulation Number:</b>	
<b>Planning Inspectorate Scheme Reference</b>	TR010036
<b>Application Document Reference</b>	9.22
<b>Author:</b>	A303 Sparkford to Ilchester Dualling Scheme: Highways England Project Team

<b>Version</b>	<b>Date</b>	<b>Status of Version</b>
Rev A	April 2019	Submission to the Planning Inspectorate at Deadline 5.

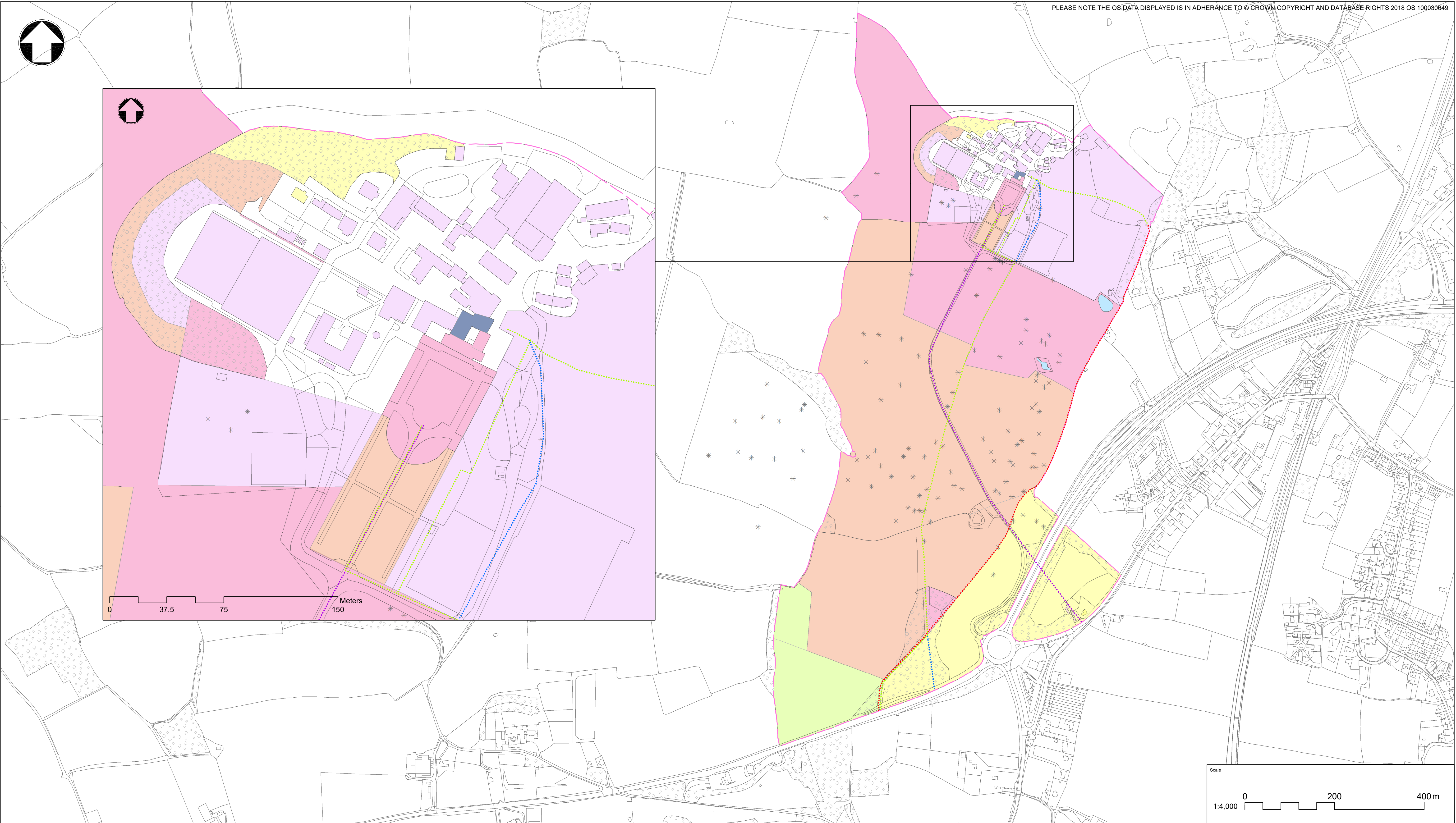
## **Table of Contents**

<b>1</b>	<b>Chronology of Hazlegrove House Registered Park and Garden</b>	<b>1</b>
----------	--	----------

# **1 Chronology of Hazlegrove House Registered Park and Garden**

- 1.1.1 The Chronology of Hazlegrove House Registered Park and Garden (RPG) has been produced at the request of Historic England (HBMCE) following their review of the Hazlegrove House RPG Statement of Significance (APP-068).
- 1.1.2 The plan contained overleaf covers the extent of the Hazlegrove House RPG. It shows the dates existing features and areas of the RPG were either constructed (buildings and features) or brought into the park (areas). The date ranges are based on those outlined in the chronology of the Hazlegrove House RPG Statement of Significance (APP-068). However, where the dates of particular features are understood more accurately an additional date range has been added.
- 1.1.3 To enable a fuller understanding of the chronology of the RPG as it is seen today historic features now lost are not included. Areas of the RPG, particularly those surrounding the school, are now dominated by 20th and 21st century structures and landscape features, which do not properly reflect the historic development of the RPG. As such the plan should be read in conjunction with the Hazlegrove House Statement of Significance (APP-068) to fully understand the development and significance of the RPG.
- 1.1.4 The plan has been compiled using the following resources:
- Historic mapping dating from 1573 to 1975.
  - Contemporary mapping and aerial imagery.
  - Hazlegrove House RPG Statement of Significance (APP-068).





KEY			
	REGISTERED PARK AND GARDEN		1556 TO 1690
	ALIGNMENT OF HAZLEGROVE LANE		1690 TO 1808
	1795 DRIVEWAY ALIGNMENT		1708 TO 1784
	1848 DRIVEWAY ALIGNMENT		1808 TO 1858
	1888 DRIVEWAY ALIGNMENT		1848 TO 1887
			1882 TO 1887
			MODERN SCHOOL SURFACING WITHIN RPG BOUNDARY
			TREES
			TREE

THIS DOCUMENT IS ISSUED FOR THE PARTY WHICH COMMISSIONED IT AND FOR SPECIFIC PURPOSES CONNECTED WITH THE CAPTIONED PROJECT ONLY. IT SHOULD NOT BE RELIED UPON BY ANY OTHER PARTY OR USED FOR ANY OTHER PURPOSE. WE ACCEPT NO RESPONSIBILITY FOR THE CONSEQUENCES OF THIS DOCUMENT BEING RELIED UPON BY ANY OTHER PARTY, OR BEING USED FOR ANY OTHER PURPOSE, OR CONTAINING ANY ERROR OR OMISSION WHICH IS DUE TO AN ERROR OR OMISSION IN DATA SUPPLIED TO US BY OTHER PARTIES.

C01	APRIL 2019	DEADLINE 5 SUBMISSION	AC	JT	ER
REV.	DATE	AMENDMENT DETAILS	ORIG	CHK'D	APP'D

Scale 1:4,000 0 200 400m				
Project Title A303 SPARKFORD TO ILCHESTER DUALLING				
Drawing Title CHRONOLOGY OF HAZLEGROVE HOUSE REGISTERED PARK AND GARDEN				
Drawing Status Published - DEFINITION				Suitability A3
Scale 1:4,000	Designed AC	Drawn AC	Checked JT	Approved ER
Original Size A1	Date MARCH 2019	Date MARCH 2019	Date MARCH 2019	Date MARCH 2019
Drawing Number HE P/N				Project Ref. No. 389107
HE551507 - MMSJV - EHR -				Revision C01
000	- DR - LH -	0066	Location   Type   Role   Number	